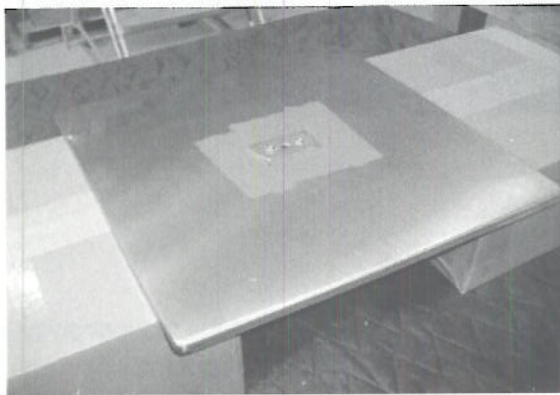
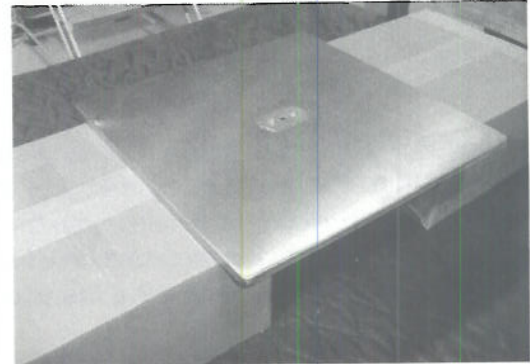
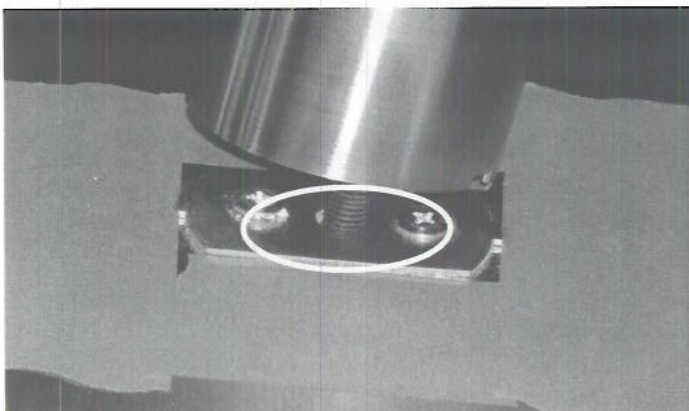
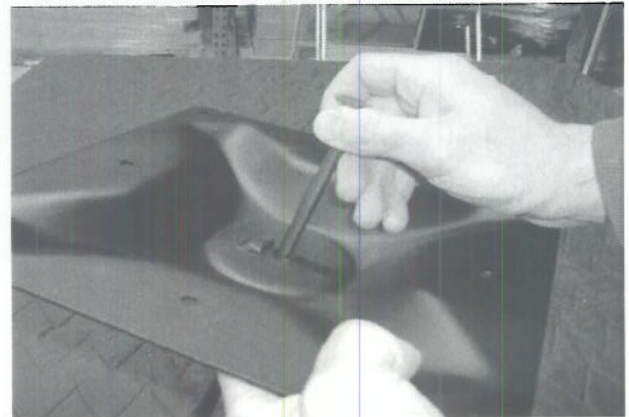


1- Carefully remove the base plate from the packaging. Rest the base plate face up supported by two sturdy faces. Hint- A couple of chairs (you might want to protect the seat surface with some cardboard) or a couple of sturdy boxes will do.



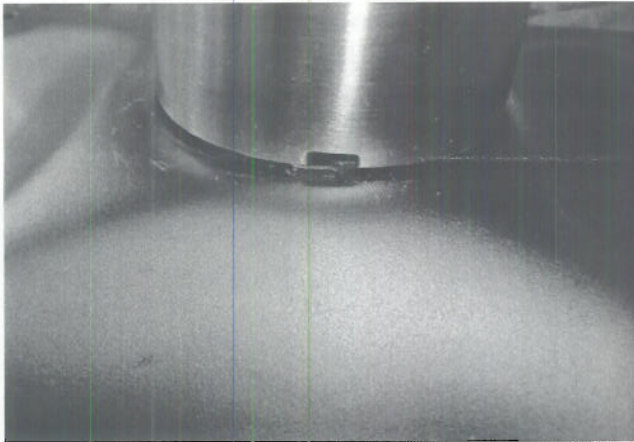
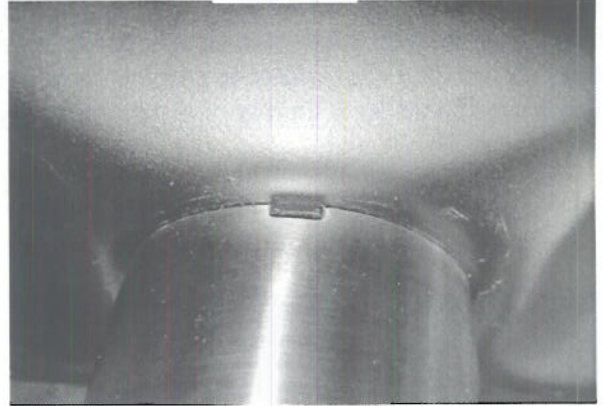
2- To protect the stainless surface against scratches, the protective film can be left on the base plate until the assembly is complete. If the base plate did not come with the protective film, strips of masking tape can be placed over the alignment washer to protect the stainless surfaces against scratches. **Note:** The masking tape is not necessary if caution is taken to not scratch the stainless surface.

3- Insert the long threaded bolt into the hole in the mounting plate. Carefully pick up the whole assembly with one hand on the column and the other holding the head of the long threaded bolt.



4- Put the end of the long threaded bolt into the hole of the alignment washer. Once this is done, align the 2 tabs of the alignment washer with the 2 slots in the column.

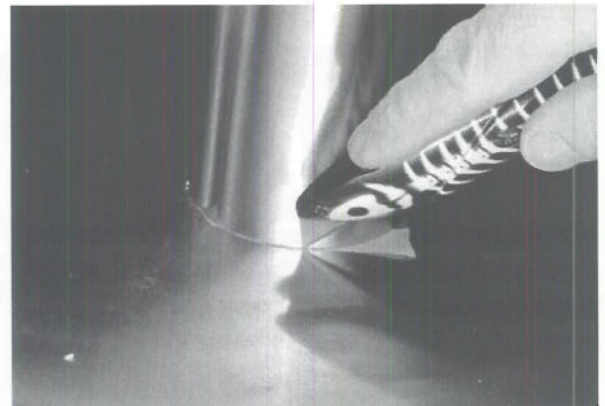
**5-** Next, align the 2 tabs of the spider mounting plate with the 2 slots in the column. This might be hard to see, so make sure the tabs are in the slot. While still holding onto the mounting plate, hand tighten the nut to the threaded bolt. Note: if the tabs are difficult to get into the slots leave them for now and go to step 6.

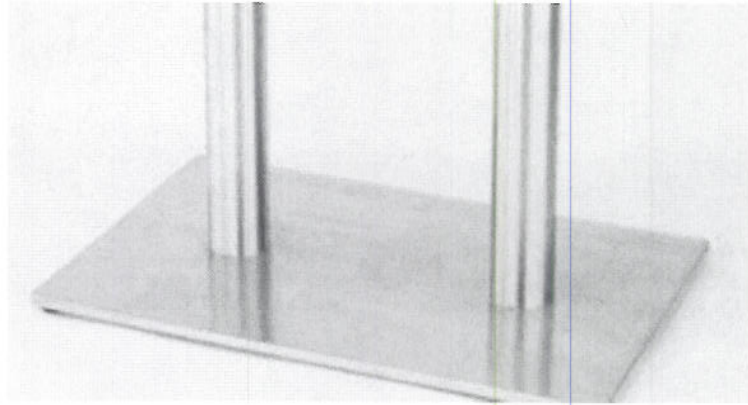


**6-** Inspect to see that all of the tabs are securely in their slots. Use the supplied tool to firmly tighten the nut. If the tabs did not initially slip into the slots, lightly tighten the nut enough allow some movement, so the tabs and the slots can be properly lined up. When they are aligned, tighten the nut some more and lightly jiggle the column or the mounting plate. The tabs should pop in the slots. Now tighten firmly.



**7-** Remove the plastic film and trim any excess from the base of the column with a knife or a razor knife. Clean the surface with a good quality stainless steel cleaner. White vinegar is a great environmentally friendly cleaner.





## Stainless Steel

Stainless steel is a material that can withstand the weather. It is rust proof and provides a shiny mirror finish that will last forever. Stainless steel is not painted nor plated, thus no dulling, peeling or flaking will occur.

Scratches in stainless can be buffed out with scotch brite pads or very fine grit sand paper (steel wool is not recommended due to the mild steel fibers contaminating the stainless surface therefore leaving rust colored stains). It is also recommended that the surface of the grain is followed in the same direction when buffing out scratches.

Weekly cleaning with a good stainless cleaner will keep the surface free from corrosive particles. In environments where there is salt, chlorine or air pollution present, a weekly clean with water and liquid detergent followed by drying will keep the stainless surface free from contamination.

## CARE AND MAINTENANCE

The beauty of stainless steel is the ability to restore the finish easily. Powder coated and chrome plated surfaces do not allow this and require the surface to be stripped back and recoated or re-plated again. Scratches in stainless can be buffed out with Scotch Brite pads or very fine grit sand paper (steel wool is not recommended due to the mild steel fibers contaminating the stainless surface therefore leaving rust colored stains). It is also recommended that the surface of the grain is followed in the same direction when buffing out scratches.

All our products are manufactured standard in a 304 grade stainless. This is a general food grade and outdoor use stainless. 316 grade stainless is generally used as marine grade close to very corrosive environments, i.e.; Salt and chlorine water.

Cleaning is necessary on all grades of stainless to prevent corrosive particles from gathering in the grain of the stainless surface. This results in a rust colored staining. One might think that the stainless is rusting, but it is actually the corrosive particles that are reacting and causing the staining. Weekly cleaning with a good stainless cleaner will keep the surface free from corrosive particles. In environments where there is salt, chlorine or air pollution present, a weekly cleaning with water and liquid detergent followed by drying will keep the stainless surface free from contamination. If staining has occurred, the surface can be cleaned with a non-abrasive kitchen cream cleanser and a light coat of a good quality protective spray such as Fluid Film can be applied. If 304 grade stainless is used in corrosive environments, a good protective spray can be used both on the stainless and powder coated surfaces to ensure extra protection.

The pressed steel spider (this attaches the base to the table top) along with the ballast plate which sits on the floor are not stainless steel. GAR Products cannot guarantee these components along with their hardware against corrosion. A protective spray is recommended if left outside or used in a corrosive environment. We commend Fluid Film manufactured by Kellsport Products [www.kellsportproducts.com](http://www.kellsportproducts.com); telephone: 888-341-4600.

# FITTINGS SKETCH MAP

PRODUCT NAME

SHARON TABLE LEG

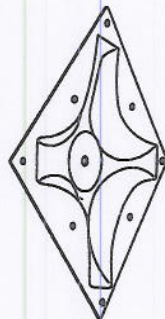
NAME

PICTURE

QUANT.

①

SPIDER



1/PC

②

POLE



1/PC

③

BASE



1/PC

④

THREADED BAR



1/PC

⑤

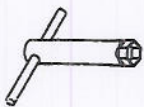
NUT



1/PC

⑥

SCREWDRIVER



1/PC

⑦

SCREW



8/PCS

⑧

ADJUSTABLE FOOT



4/PCS

